

PORT NETWORKS

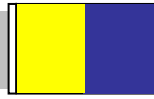
Port Networks Wi-Fi

**NETWORK
USER'S GUIDE**

(MACINTOSH OSX OPERATING SYTEMS)

PORT NETWORKS, LLC

World Trade Center of Baltimore · 401 East Pratt Street, 24th Floor, Baltimore, MD 21202



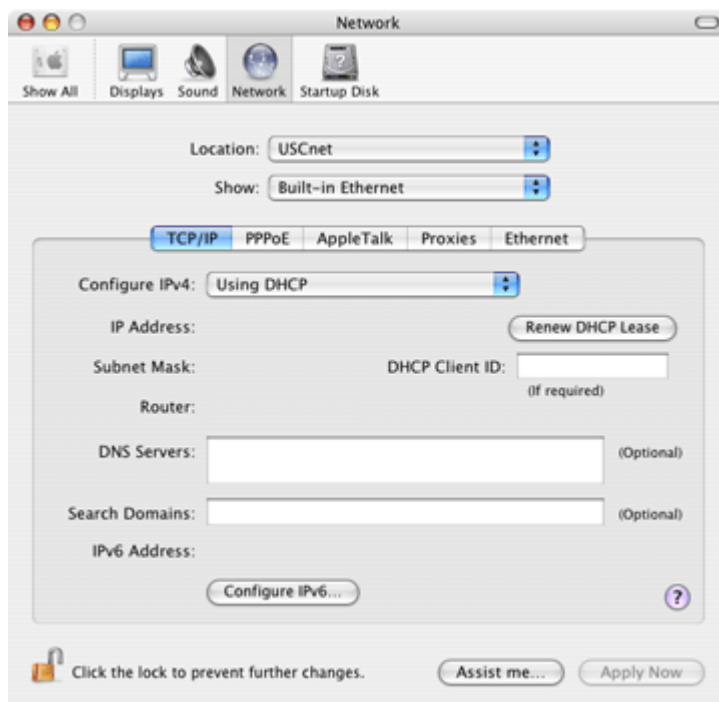
Introduction

In most cases, your computer's configuration will not need to be modified to connect to Port Networks Wi-Fi. Because our network is designed to recognize and adapt to different computer configurations, you should be able to simply open a browser and see our Sign-In page.

The following information is provided in case your computer has never been configured for any network access. It will also be helpful if you are having a problem connecting to our network. If you need assistance at any time, please call the Port Networks Help Line at (410) 637-3707 or send an email to support@portnetworks.com.

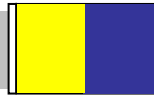
Step 1: Configuring Your Computer to Obtain a DHCP Address

Although Port Networks Wi-Fi works with a variety of network configurations, we suggest setting up your computer to obtain a "dynamic" network address from our servers. To do that, go to the Apple menu, choose **System Preferences**, then **Network**. This will bring up a screen similar to the one below, showing the network protocols that are available.



Above the tabs, where there is a drop down menu labelled **Show**, choose the Airport card or other device you are using to connect. Next, click on the **TCP/IP** tab. Set the **Configure** drop down menu to **Using DHCP**. When done, click **Apply Now**.

(more...)



NETWORK USER'S GUIDE

Step 2: Connecting to Port Networks Wi-Fi

Because Mac OSX includes a feature that scans all available wireless networks, you will not need to use a separate program to connect to Port Networks Wi-Fi. When you are in range of a Port Networks Access Point, the Airport menu will show that our network (you will see it identified as Port Networks Public Wi-Fi) is available. If asked, check the box to allow the connection to go through, and then click **Connect**.

Step 3: Configuring SMTP and POP3 Access

Open the application called Mail, then go to the **Mail** menu (if you get other pop-up screens when opening Mail, close them until you can click on the **Mail** menu) and click on **Preferences...**



When the "Accounts" window opens, choose 15 Minutes (or longer) as the time interval for the program to check for new email. Next, click on the "Add Account" button.



In the **Account Information** tab, choose **Account Type** from the pull-down menu and set to **POP**.

The remaining settings should be as follows:

Description: <your full name>

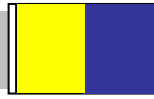
Email Address: <your username>@portnetworks.net (e.g., johndoe@portnetworks.net).

Full Name: <your full name>

Incoming Mail Server: pop.portnetworks.net

User Name: <your username> (e.g., johndoe).

Password: <your password> (optional, if not entered here you will be asked each time)



NETWORK USER'S GUIDE

To set Outgoing Mail Server and its variety of settings, click the Options button.



Make the following settings in the **SMTP Server Options** window:

Outgoing Mail Server: smtp.portnetworks.net

The remaining settings should be left on their default settings:

Server port: 25

Use Secure Sockets Layer (SSL) should NOT be checked.

Authentication: None

User Name: <blank>

Password: <blank>

Step 4: Configuring your Firewall

If you use a firewall like McAfee personal firewall, Norton Firewall or any other Firewall, then you need to configure your firewall to ensure that

- Internet Explorer is allowed to access the Internet
- Please ensure that you have not blocked **ALL** incoming traffic. If your firewall is set to Block **ALL** Traffic, then you will not be able to access Port Networks.